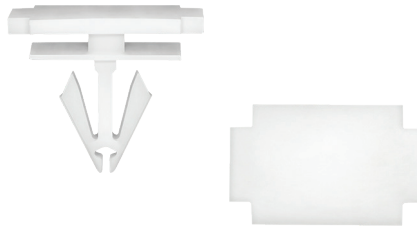




18-9523

Replaces: 11611342
RETAINER-WEATHERSTRIP
 Plastic, Yellow
 Hole: M5.2,
 Head: 6.5x14MM
 Flange: 9.5MM
 Stem Lgth: 8MM
 O/L: 12.4MM
 P.R.: 0.7MM
 GM Casada,
 Regal, Verano, SS 2011/
 UNIT PACKAGE 100



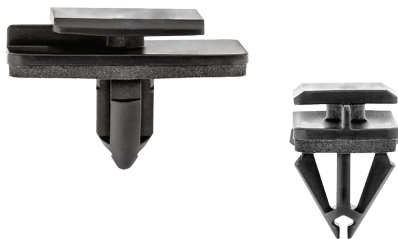
18-9524

Replaces: 11588818
RETAINER-WHEEL MOULDING
 Plastic, White
 Hole: M9
 Top Hd: 10/16x20/26MM
 Flange: 14x20MM
 Stem Lgth: 15.8MM
 O/L: 22MM
 P.R.: 0.8-3.5MM
 GM Encore, XT5, Bolt, Trax,
 Acadia, H3 2007/
 UNIT PACKAGE 25



18-9522

Replaces: W717823-S300
**RIVET-DRIVE TYPE,
 SPLASH & HEAT SHIELDS**
 Plastic, Black
 Hole: M6.5
 Flange: 25MM
 Stem Lgth: 15.8MM
 P.R.: 4.3-4.8MM
 Ford Mustang 2014/
 UNIT PACKAGE 15



18-9521

Replaces: 68283229AA
RETAINER-ROCKER MOULDING
 Plastic w/Seal, Black
 Hole: M9, Top Hd: 14x20MM
 Flange: 14x32MM, Stem Lgth: 15MM
 O/L: 21.2MM, P.R.: 0.9-1.4MM
 Chrysler 300, Dodge Charger 2015/
 UNIT PACKAGE 10



18-9528

Replaces: 6510123AA
**GROMMET & SCREW-ROCKER
 FRT & RR WHEEL SPLASH SHIELD
 PICK-UP BED LIGHTING**
 Plastic, Black
 Grommet: Slot: 10x12MM
 Leg Lgth: 36MM
 Flange: 18MM
 Black Screw: M4x35MM
 A/F: 7MM, Sems: 12MM
 Chrysler Pacifica 2017/
 Dodge Challenger 2011/
 Jeep Cherokee 2015
 RAM 1500-3500 2016/
 UNIT PACKAGE 5

Click on these 2 links at
www.carpak.com
 for the current Supplement
 and prior Previews.

**THE NEW ITEM
 SUPPLEMENT**

NEW ITEM PREVIEW